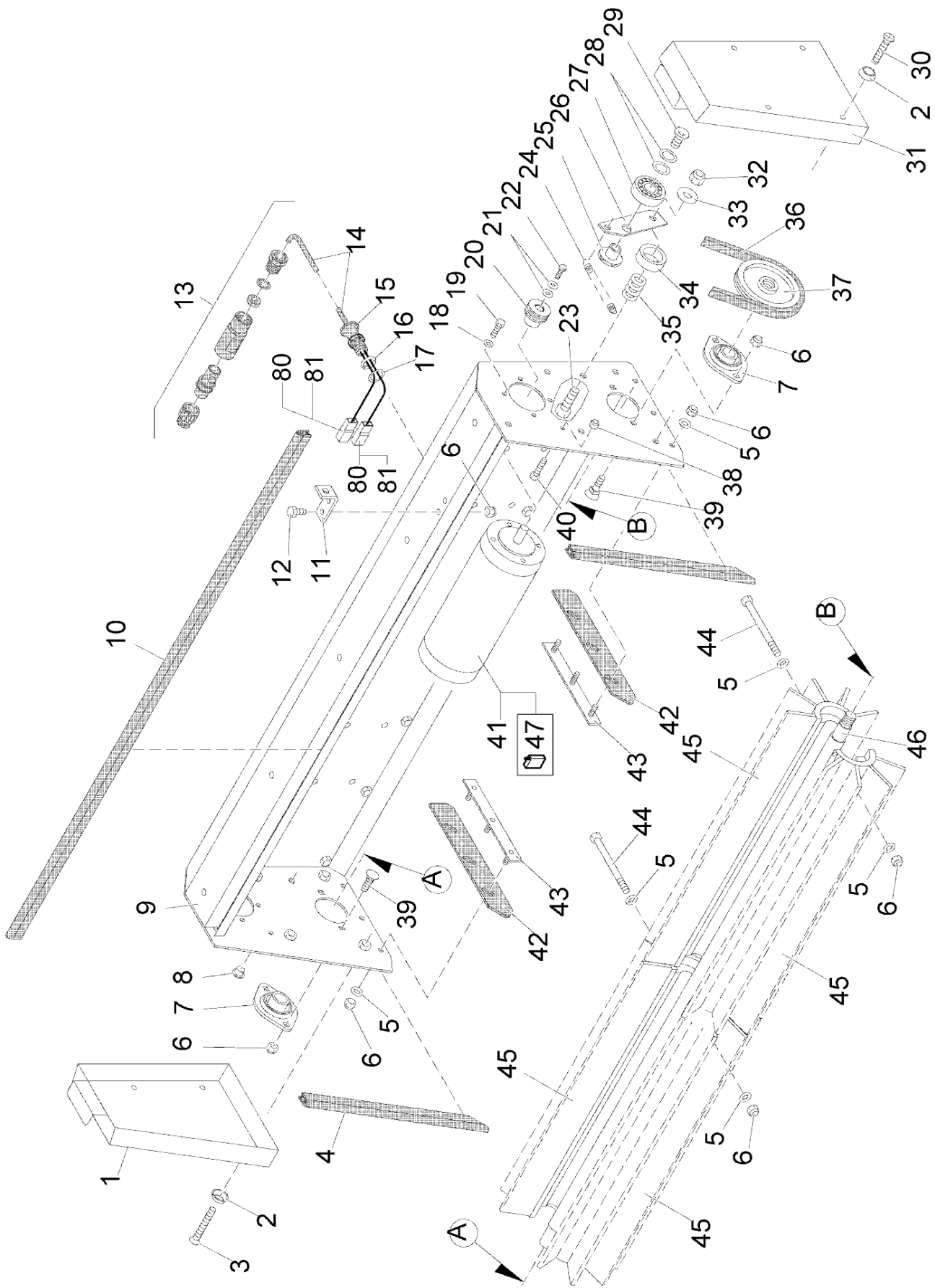


Pre-sweeper unit (7604) part 1 (99760400BT10)



Pos.	Part No.	Material number	Description	Qty.	Remarks
1	01056550	90359282	Cover, right	1	
2	00157690	12349023	Annular plate	18	
3	00529260	11206224	Countersunk screw	4	
4	00800100	25583030	Edge protection	2x890mm	
5	00053730	12310033	Washer	18	
6	00051520	12040044	Hex. Nut	18	
7	00059770	90279027	Flange bearing	2	
8	00902300	15590243	Drain plug	3	
9	01056570	96078258	Housing	1	
10	00800100	25583030	Edge protection	1040mm	
11	00875790	90283755	Angle	1	
12	00104500	11038064	Hexagon screw	2	
13	00059760	90279050	Connector	1	
14	03010460	97043269	Wiring harness	1	
15	00964270	90250143	Screw connection	1	
16	00057720	15286149	O-ring oil resistant	1	
17	00538350	12336350	Adjusting washer	1	
18	00053720	12310025	Washer	4	
19	00054410	11038049	Hex.bolt	3	
20	01056590	90358680	Belt pulley	1	
21	00557150	12332060	Washer	2	
22	00023080	11038973	Hex.bolt	1	
23	00053100	11038247	Hexagon screw	1	
24	00046980	90281155	Tension spring	1	
25	00705300	90119272	Special nut	1	
26	01056680	90359563	Tension lever	1	
27	00126330	14110290	Deep groove ball bearing	1	
28	00046720	12335188	Adjusting washer	2	
29	00705440	11225281	Countersunk screw	1	
30	00529260	11206224	Countersunk screw	4	
31	01056600	90358714	Cover, left	1	
32	00051510	12040051	Hex. Nut	9	
33	00042900	12332029	Washer	1	
34	00866130	90133992	Ring	1	
35	00053750	12310041	Washer	14	
36	00142110	16422206	Wedge rib belt	1	
37	00059790	90278854	Belt pulley	1	
38	00051340	12040036	Hex. Nut	4	
39	00076540	11620010	Screw	2	
40	00109540	11039351	Hex.bolt	1	

41	00981100	90358698	PM-motor	1	
42	00059780	90278979	Sealing strip	2	
43	00875710	96061320	Metal strip	2	
44	00155200	11032687	Hex.bolt	6	
45	00370640	90268848	Half tray (sweeper roller)	4	
46	00245300	90278920	Pipe	1	
47	01057310	01057310	Carbon brush holder	1	
80	00559670	19725035	Case	2	
81	00083640	19791029	Plastic cover	2	